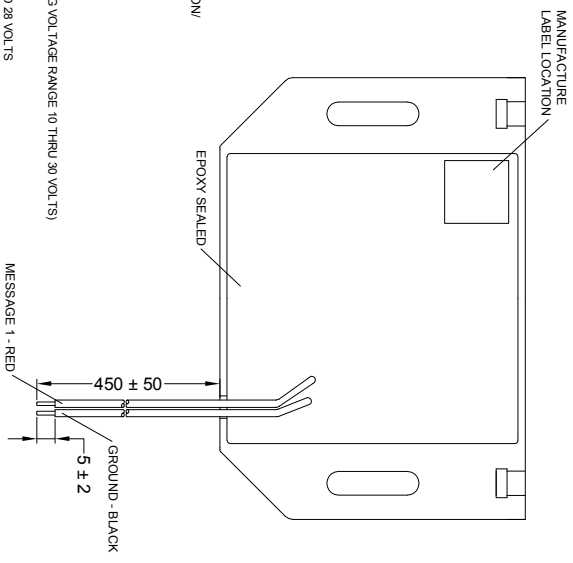
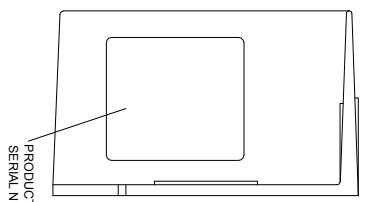
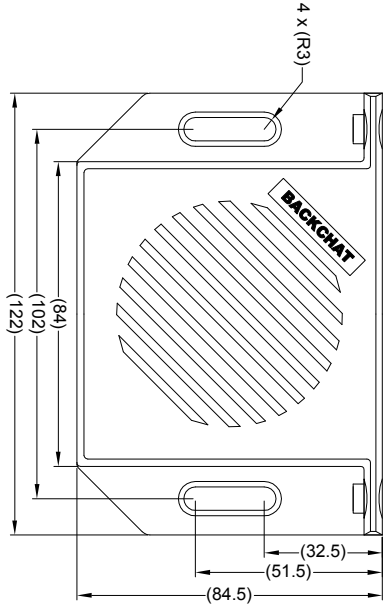
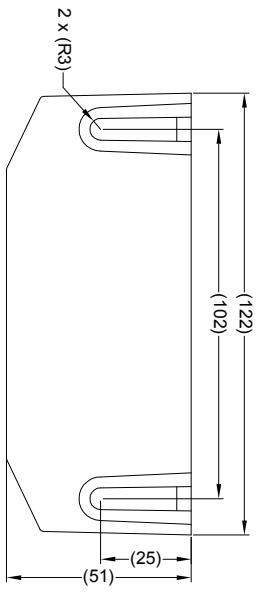
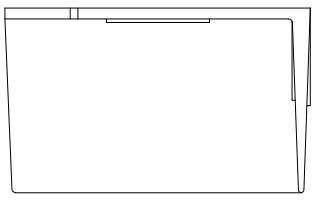
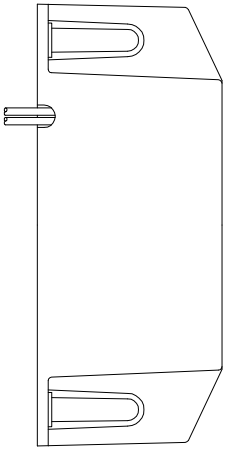


| | | | |
|--|-------------|------------------|----------------|
| Revision Notes | | | |
| R1 - NOTES UPDATED TO INDICATE CORRECT LABEL DETAILS. STANDARDS UPDATED AS PER ECR CR-A253 | | | |
| APPA-AHEADLE | Drawn/BATES | Checked/MIBUTLER | Approved/GPUTH |
| | | | Date: 06/02/14 |



SPECIFICATION

RATED VOLTAGE: 12 AND 24 VOLTS DIRECT CURRENT (WORKING VOLTAGE RANGE: 10 THRU 30 VOLTS)
 RATED CURRENT: 0.5 AMPERES OR LESS
 SOUND PRESSURE: 90/4 DECIBELS AT TEST VOLTAGE OF 14 AND 28 VOLTS
 CABLE THICKNESS: ALL CABLES 240 2MM
 MESSAGE(S): "CURLEW BIRD SOUNDS"
 MESSAGE LIBRARY NUMBER(S): M1002
 VOICEAGENT: ANIMAL
 LANGUAGE: ANIMAL



- NOTES:**
1. MATERIAL: ABS PLASTIC - ULTRA VIOLET STABILIZED
 2. FINISH: BLACK
 3. FOR PRODUCT LABEL REFER TO LATEST REVISION OF DRAWING BE-002749-XX-13.
 4. FOR GIFTBOX LABEL REFER TO LATEST REVISION OF DRAWING BE-002325-XX-13.
 5. FOR MANUFACTURE LABEL REFER TO LATEST REVISION OF DRAWING BE-001990-XX-12.
 6. 2 X M6 X25 BOLTS, 2 X M6 FLAT WASHER & 2 X M6 NUTS ARE SUPPLIED IN A PRESS SEAL BAG IN THE BOX.
 7. POWER & MESSAGE CABLE LENGTHS ARE MEASURED FROM CABLE ENTRY POINT ON HOUSING.

PROPRIETARY NOTICE

THIS DESIGN AND TECHNICAL INFORMATION APPEARING ON THIS DRAWING IS THE PROPERTY OF BRIGADE ELECTRONICS, AND IS DISCLOSED IN CONFIDENCE. IT IS NOT TO BE COPIED, REPRODUCED, REVEALED TO OR EXPLOITED BY OTHERS, EITHER IN WHOLE OR IN PART WITHOUT THE EXPRESS WRITTEN CONSENT OF BRIGADE ELECTRONICS.



| | | | | |
|-----------------|---------------------------------|-----------------------|-----------------------|----------------------|
| Third Angle | Assembly PI Approval AHEADLE | Approved by DKERRA | Checked by JNEWMAN | Drawn by MIBUTLER |
| | Angle of Projection | Units mm | Scale N/A | Released 25/01/12 |
| | Status RELEASED | Part No #1417 | | BE-001411-01-11 |